

2Connect User Guide



Contents

- 1. Introduction.....3
 - 2Connect Examples 3
- 2. Getting Started.....6
 - Start with a blank document 6
 - Adding Text 7
 - Changing text size 8
 - Adding colour, pictures, sound and notes 9
 - Linking Nodes Together 13
- 3. Collaboration.....14
- 4. The Top Toolbar.....16

1 Introduction



What is 2Connect?

- 2Connect is a tool for concept mapping or to support the writer with planning
- Ability to import pictures, sounds, notes and hyper-links to each node.
- At the simple click of a button the writer can type while looking at their completed concept map

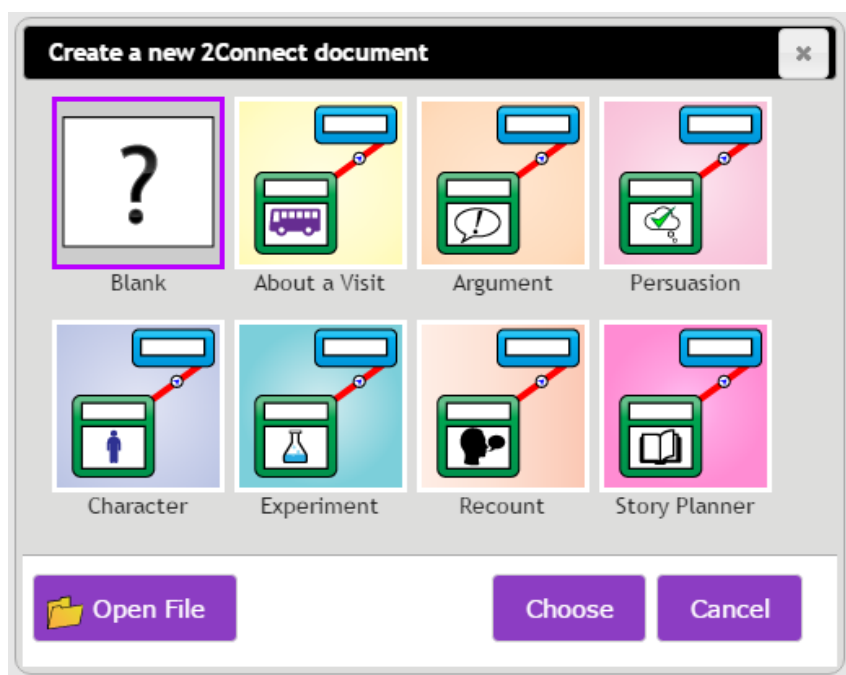
2Connect can be found in the tools section of Purple Mash. Click on the 2Connect icon to open the tool.

1.1 2Connect Examples

There are templates contained in 2Connect for use in the classroom. These can be found by clicking the



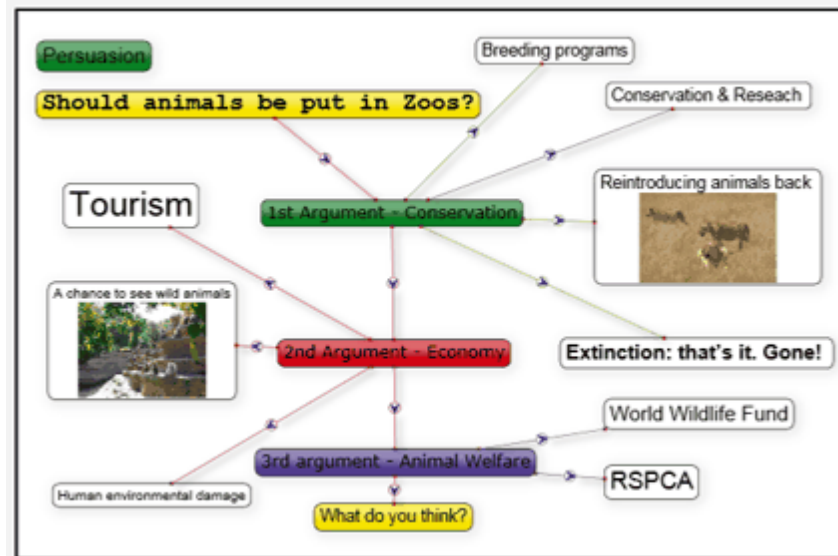
'New File' button and then choosing the template you want to use from the selection:



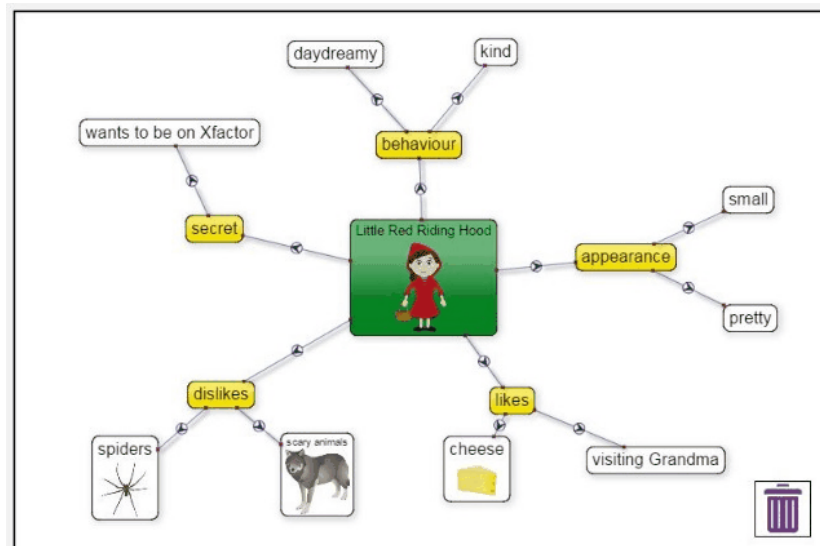
On the next few pages are some examples that have been designed by teachers and used in the classroom.



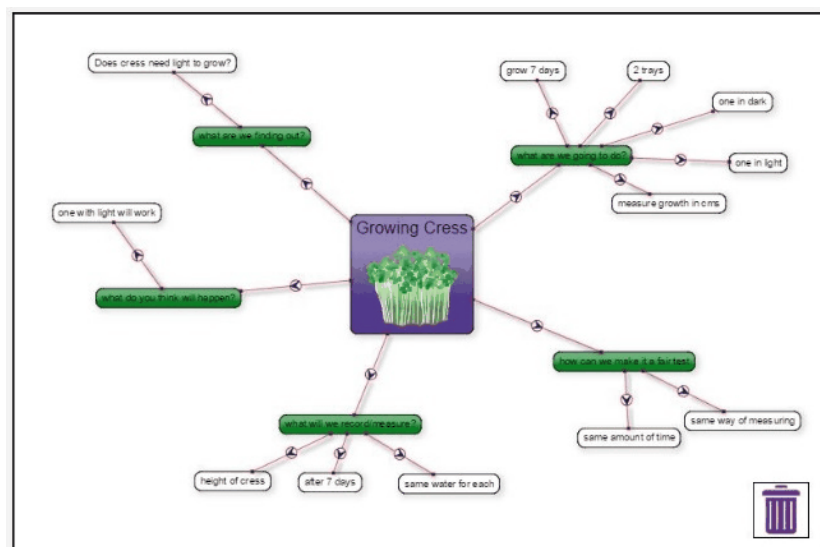
Planning an argument about whether animals should be kept in a zoo.



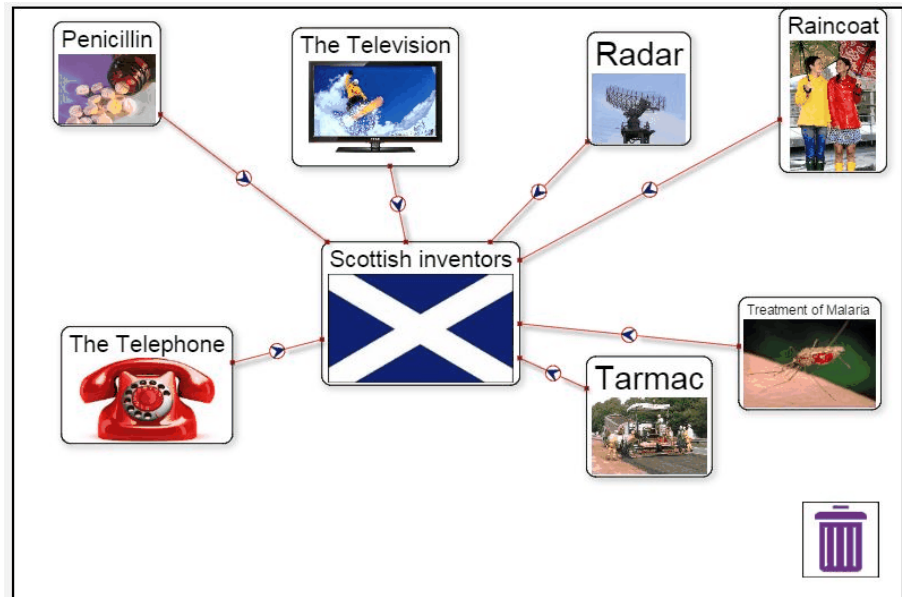
A story plan to retell a traditional tale



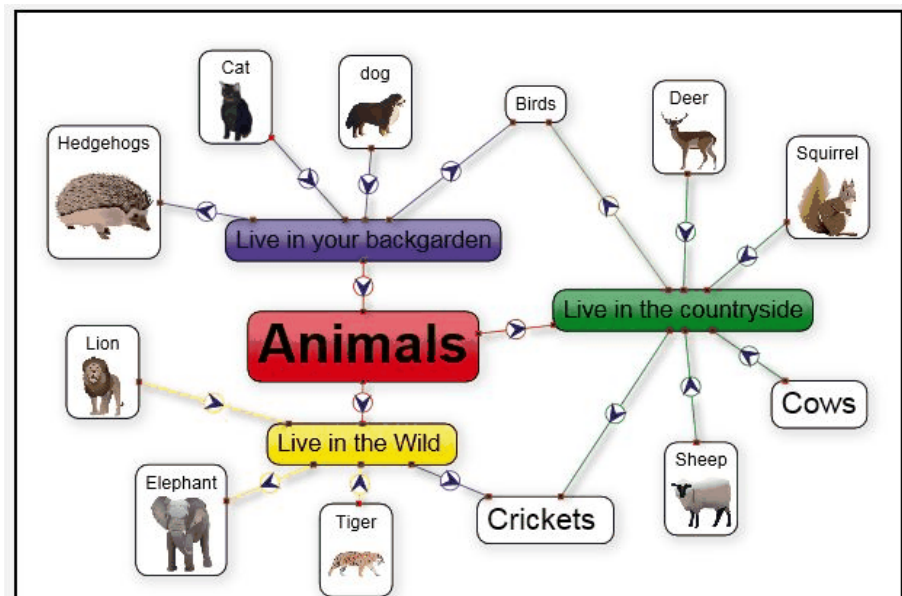
A science experiment about growing cress



A homework assignment
about Scottish inventors



Sorting animals into groups
then adding in sounds and
pictures



2 Getting Started

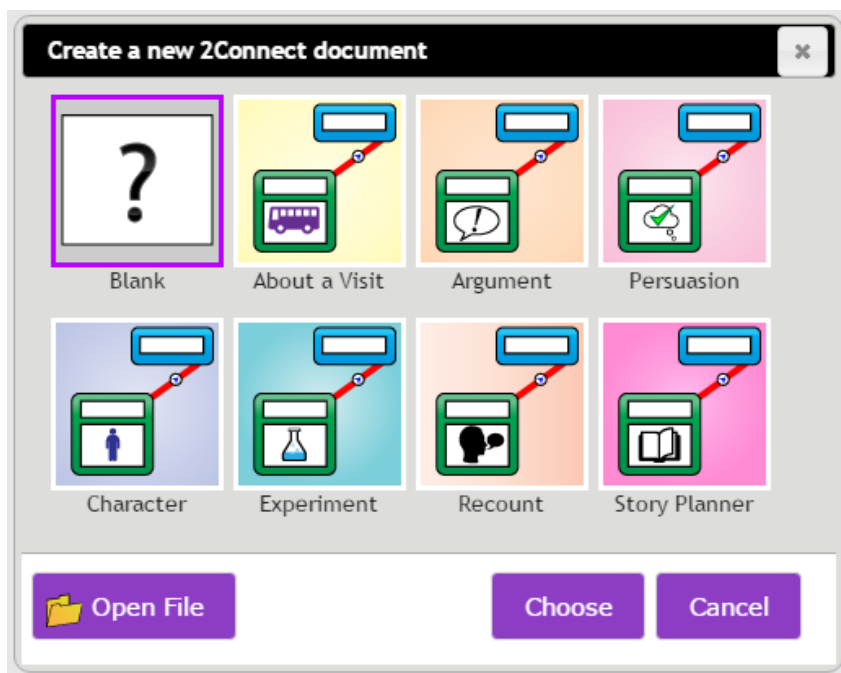
- For this example we will create a map about the wives of Henry VIII.
- We will use a blank screen rather than a template.
- We are going to give our document a title, insert pictures and write notes.
- Everything will be linked together appropriately

Use the menus to navigate through the stages of creating the map.

2.1 Start with a blank document

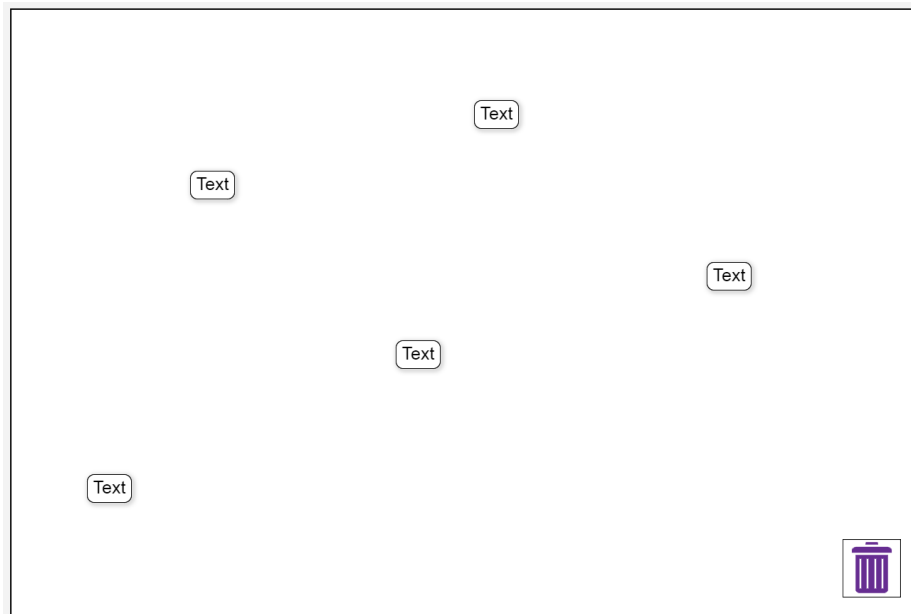


These can be found by clicking the 'New File' button or choosing 'Blank' as the template.



2.2 Adding Text

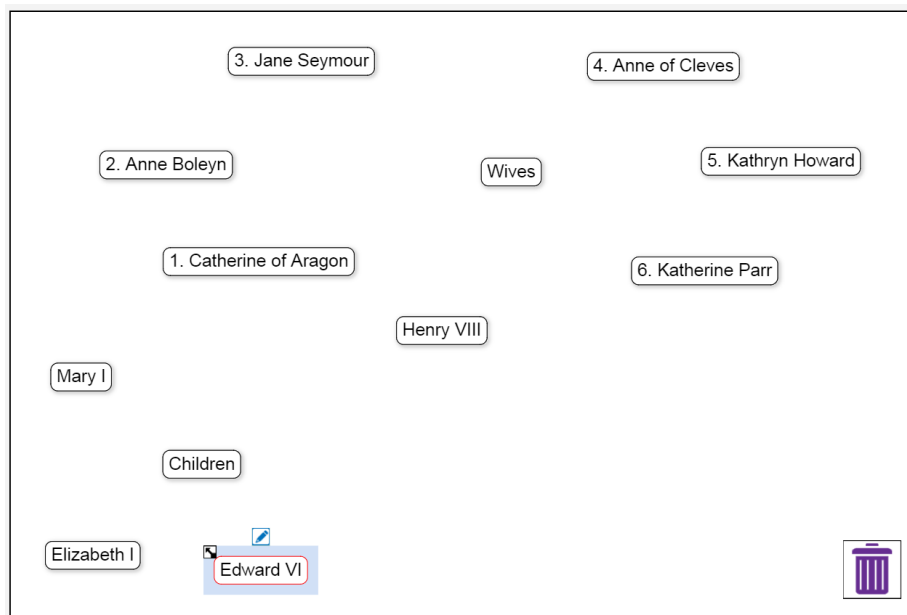
In 2Connect you can click and type anywhere in the document.



Click in the centre of the document and write the title. Each piece of text is called a node.



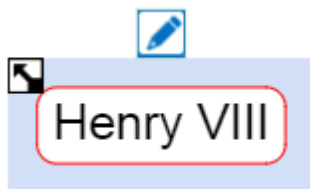
Write subheading nodes around the title.



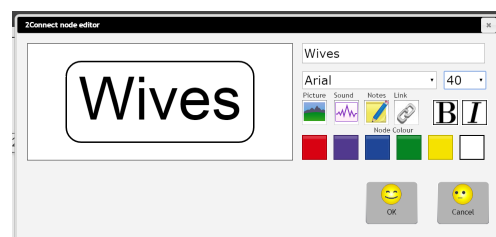
2.3 Changing text size

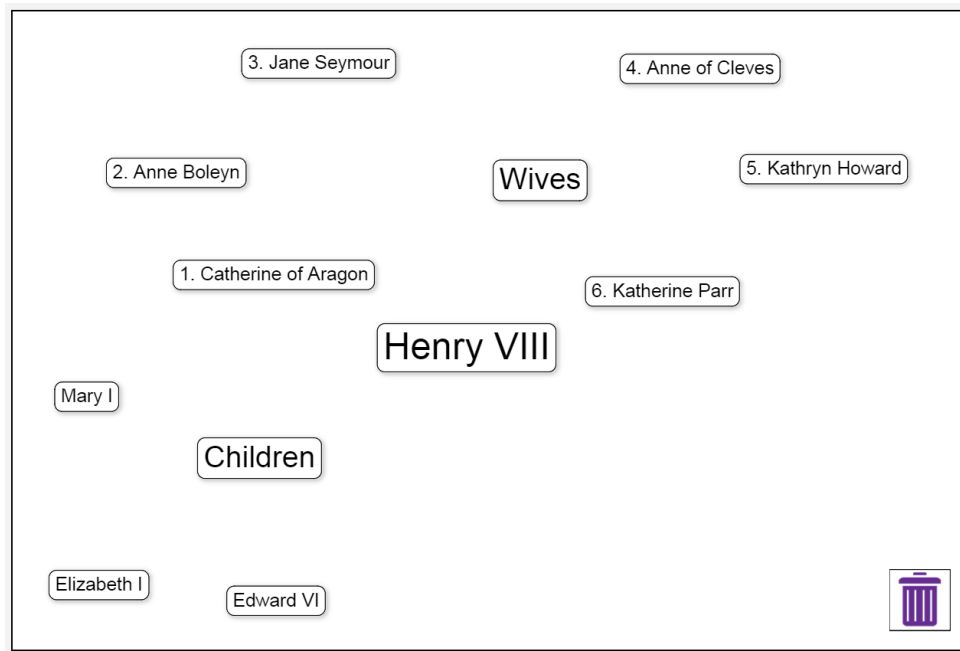
When all the text is the same size it is difficult to highlight headings and subheadings. We can easily change the size of the text to make it easier to read and understand.

When you click on a node a pencil will appear as will arrows in the top corner.



The arrows allow us to make the node bigger and smaller. We can make the main heading node bigger and subheading nodes smaller. This makes the document easier to read. You can also change the node size by clicking on the pencil and altering the size.





2.4 Adding colour, pictures, sound and notes

At the moment the document is difficult to read and follow. To make the document easier to read and understand we can add

- Colour
- Pictures
- Sound
- Notes
- Hyperlinks

Colour

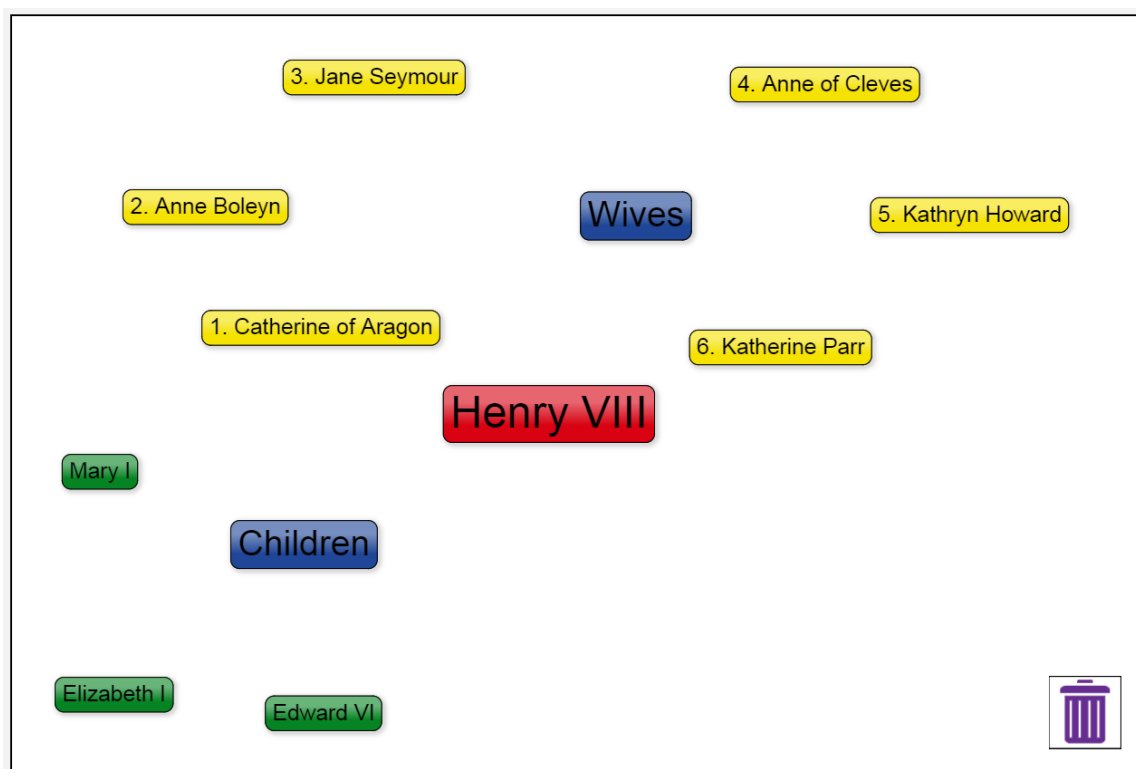
To add a background colour to each node click on the node, then the pencil symbol and then choose the



colour.

You can highlight all the subheadings nodes in one colour and information for the subheading in another. This now makes the document easier to read and understand.





Pictures

You can easily add pictures to each of the nodes. As before click on the pencil and then click the picture



icon.

You can choose a picture from the clipart bank, upload an image from your device, use the webcam or paint an image.

Once the pictures are added you may need to click on the arrows to drag and alter the size so they fit on the page.

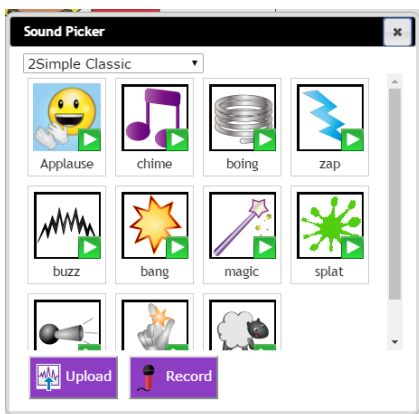


Sound

To add sound to each node click on the pencil and then select sound



You can then select a sound from the sound library.



If the sound you want isn't there then you can upload a sound or record one by clicking on the buttons at the bottom of the Sound Picker screen.

Notes

Notes allow the user to add some information to the node. Click on the pencil and then on Notes

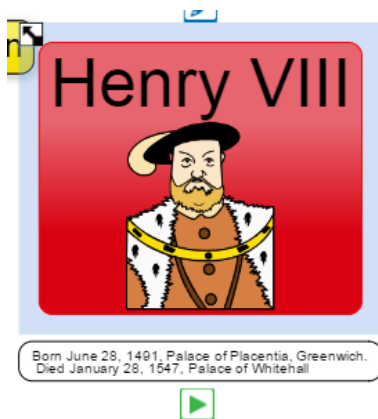


You can then type the note into the box. These notes are about the birth and death of Henry.



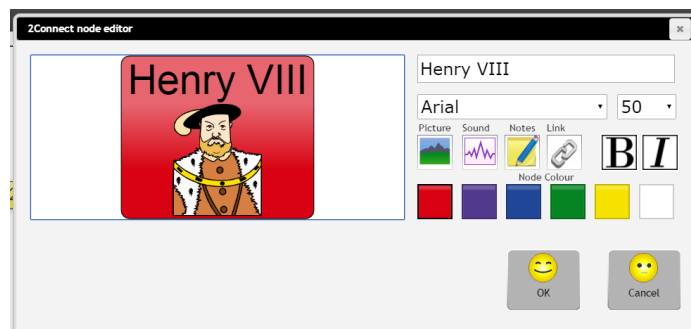


The notes will show up when the user clicks on the node.

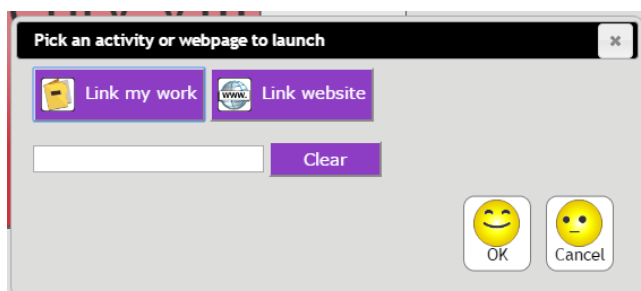


Hyperlinks

Users can add hyperlinks to nodes. Click on the pencil and then click 'Link'.

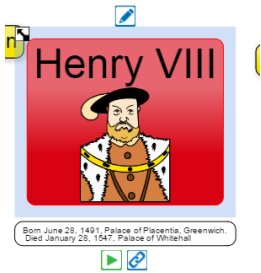


The user can add a hyperlink to a website or work saved in Purple Mash.



The hyperlink is below the notes when the user clicks on the node.

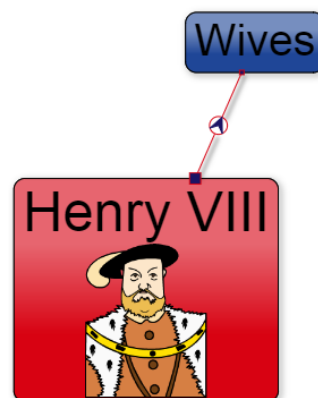




2.5 Linking Nodes Together

On 2Connect it is easy to link nodes together to show how they are connected.

To add a link hover the mouse over the edge of the node. The arrow will turn to a hand. Click and

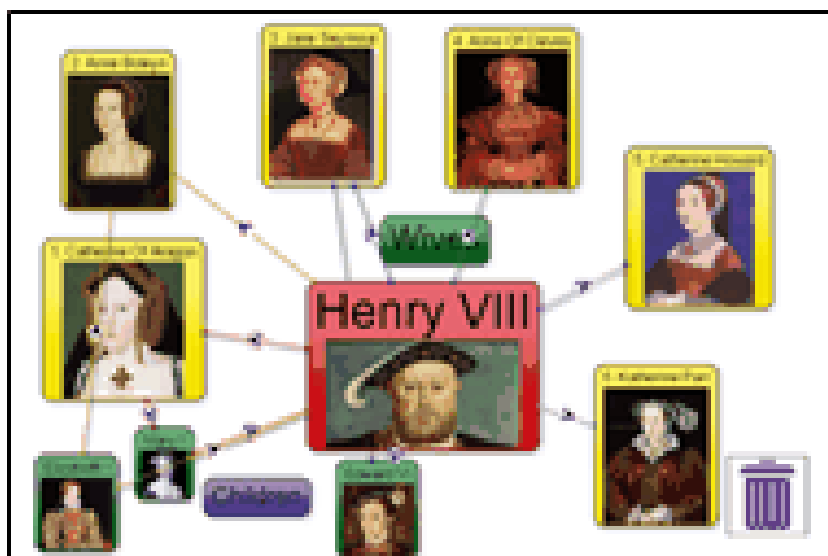


then drag the line to the node you wish to link.

To change the direction of the link and colour of the line, click on the arrow



Select the line colour and the direction of the arrow accordingly. Links can be made in different colours so they are easy to see.



3 Collaboration

Shared Folders

For pupils to be able to collaborate on a file, the Shared folders option must be activated on their account. You can check this by:



Click on the Admin tab.

Admin



Create and
manage users

Opening the Create and Manage users tool.



Click on Pupils on the left-hand side.

View

Check the tick-box for one of your pupils and then click the View button on the top right.

The following check box will be ticked to allow sharing.

Shared folders



If it is not ticked then the school Purple Mash administrator will need to change this setting for your pupils.



E-Safety Settings

You will also need to allow collaborative work in the E-Safety Settings:



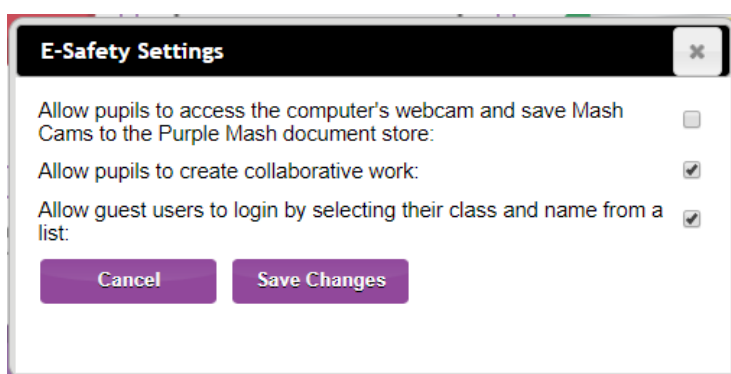
Admin

Click on the Admin tab. **Admin**. Open the E-Safety Settings tool.



E-Safety
Settings

Tick the box 'Allow pupils to create collaborative work' and save the changes.



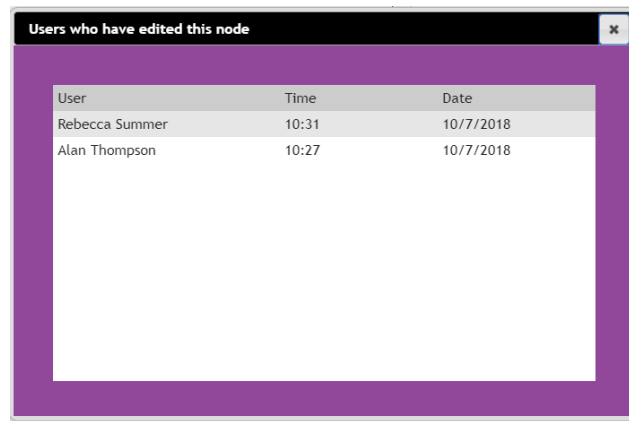
Creating a Collaborative file

The 2Connect file must be created by a teacher and then saved in the class shared folder (or dragged into the folder from the teacher's work folder).

Pupils can then open the file from their class folder and start writing.

The history of the file; including who has created a node can be examined by clicking on a node and then on the History button.





User	Time	Date
Rebecca Summer	10:31	10/7/2018
Alan Thompson	10:27	10/7/2018

4 The Top Toolbar

The following is an explanation of the buttons on the top toolbar.



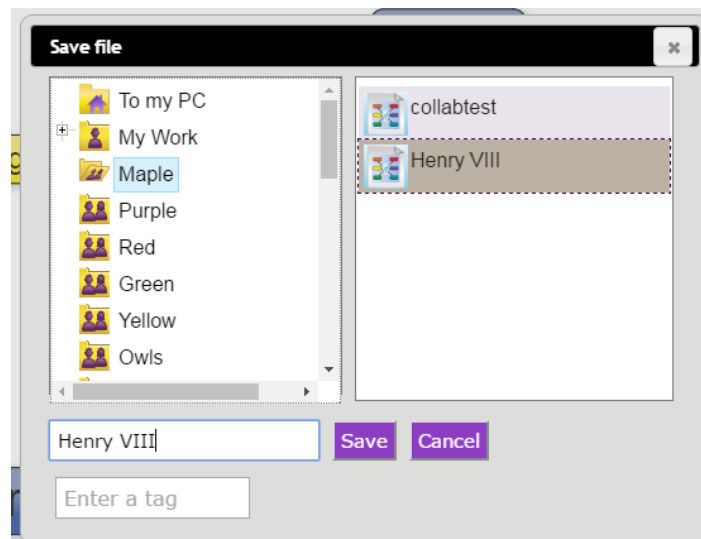
New File



Open existing file



Save your 2Connect document to either PC, Your work (in the cloud) or to a Shared Folder



Export the Concept Map as a PNG file. This can be used in other documents





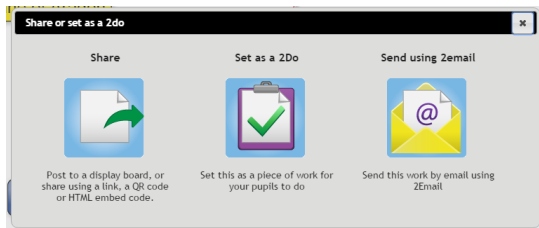
Share the document so more than one user can edit it.



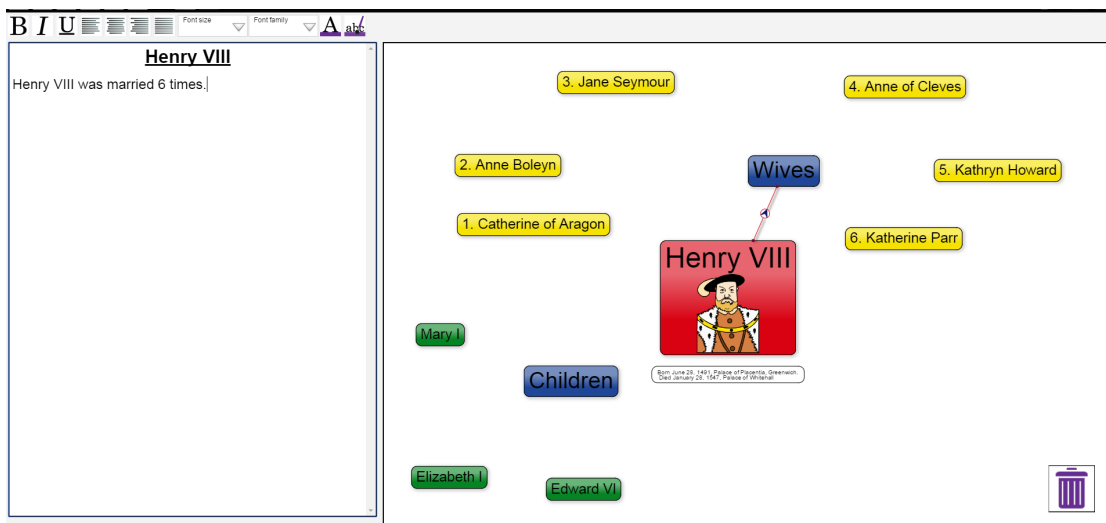
When collaboration is in progress the icon will change to



Share the concept map on a Display Board or Online.



A simple word processor appears so the user can type their document while looking at their concept map.





Presentation Mode. All nodes will hide except the central node, clicking on a node will bring up all the nodes that are interconnected.

