



2Handwrite User Guide





Contents

1. Introduction.....	3
2. Screen layout and commands.....	4
Main Menu	4
Keyboard Entry Mode	5
Paper and Pen type tools	6
Recording tools	9
Navigation Tools	9
3. Worksheet Creator.....	10



1. Introduction



What is 2Handwrite?

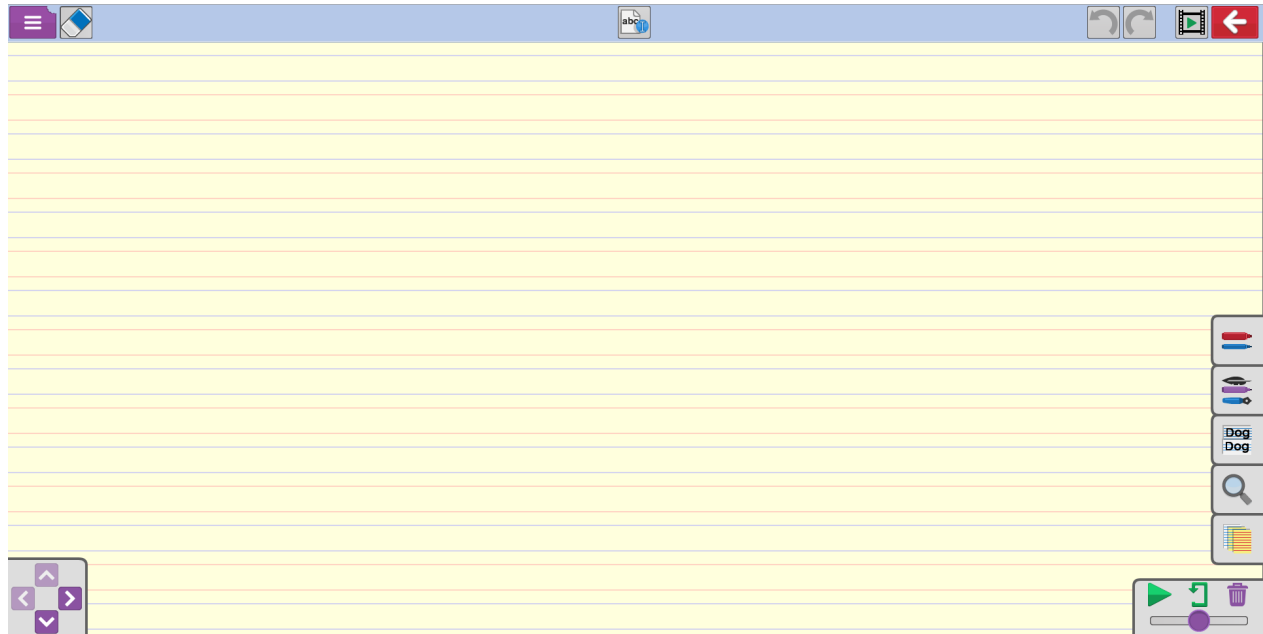
- An interactive whiteboard tool for modelling and teaching handwriting.
- A worksheet generator to easily generate and differentiate your own customised handwriting practice sheets.
- A pupil tool to practice writing on the interactive whiteboard or on a touch-screen device. Writing is recorded and can be played back and reviewed at any time.

2Handwrite can be found in the Tools --> English section of Purple Mash.



2. Screen layout and commands

2Handwrite has been designed so that tools that will commonly be accessed during use on an interactive whiteboard, appear at the bottom of the screen.

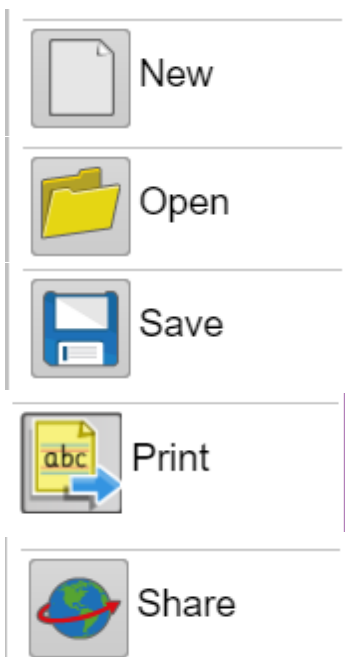


2.1 Main Menu

The Main menu is the same for all Purple Mash tools.



Eraser; click here then on the text to erase text.



Open a new blank file.

Open existing file

Save the file to Purple Mash online folders or device.

Worksheet Creator; [See Worksheet Creation section.](#)

This will give you various options for sharing the file. See the manual; [Sharing Purple Mash](#)



Undo and redo buttons; this will also undo the video recording of the removed text.

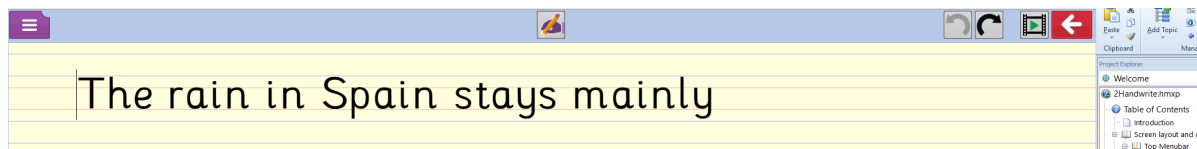



for further details.

2.1.1 Keyboard Entry Mode



In keyboard mode, text can be typed directly onto the screen:



Once you have entered the required text, click on the  button on the top menu-bar to return to the handwriting mode.

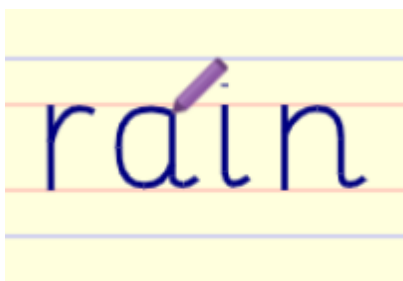
On this screen you can now:



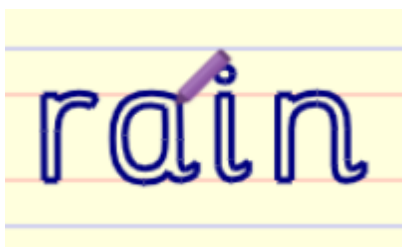
Animate the text to demonstrate how to write the letters/words/sentence.



Change text outline mode. There are two modes:



Solid lines



Outlines

The [pen tools](#) can be used to copy the words.

The [paper tools](#) can be used to alter the look of the page.

[Recording tools](#) can be used to record handwriting.

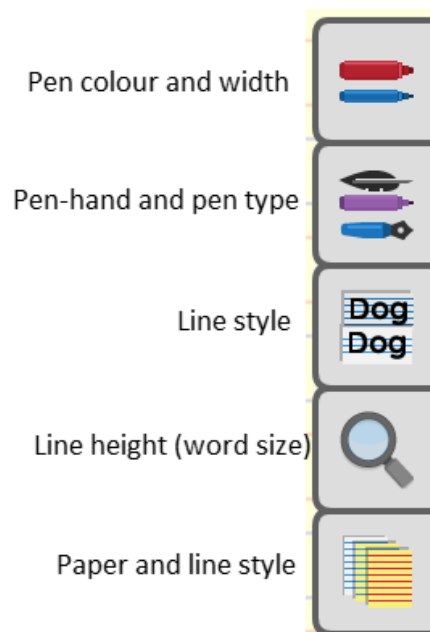
[Navigation tools](#) can be used to move around the page.

[Worksheet creator](#) can be used to create practice printed worksheets.



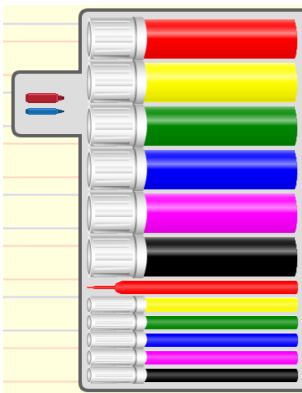
2.2 Paper and Pen type tools

These tools can be selected in the toolbar on the right-hand side. Click for more details.



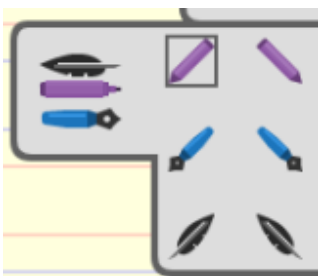
Pen colour and width

There are the following choices of pen colour and width:



Pen-hand and pen type

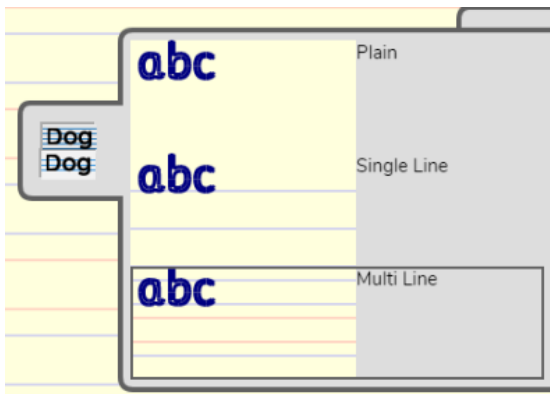
Animations can be shown left-handed and right-handed with the following pen types:





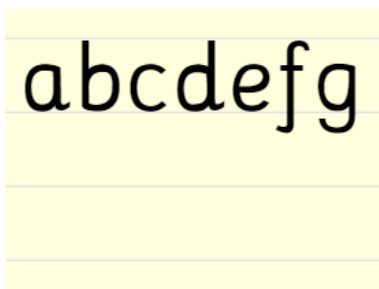
Line style

There are the following line styles:

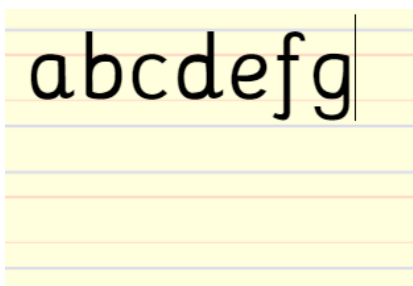


Plain has no lines.

Single line:



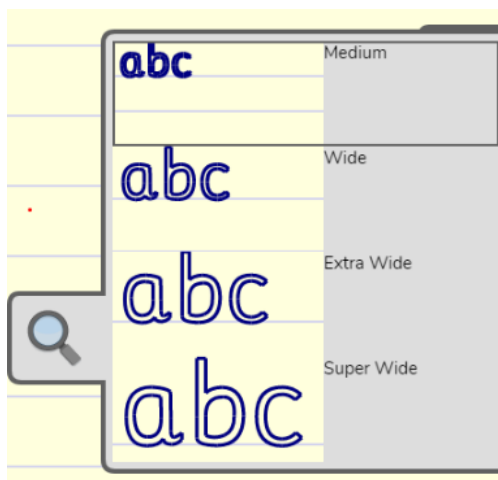
Multi-line:





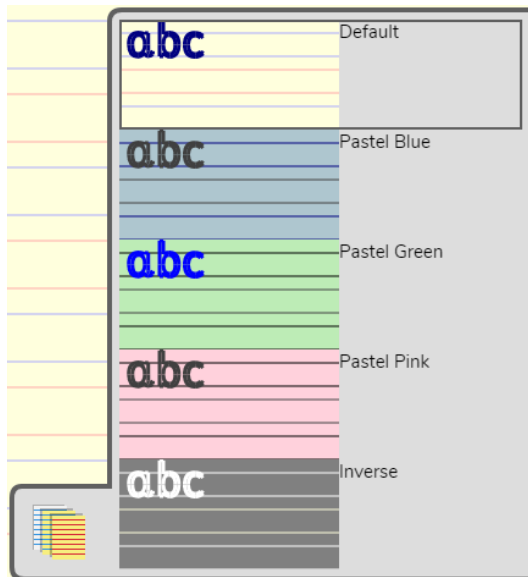
Line height (word size)

Altering the line height has the effect of making the writing bigger or smaller:



Paper and line style

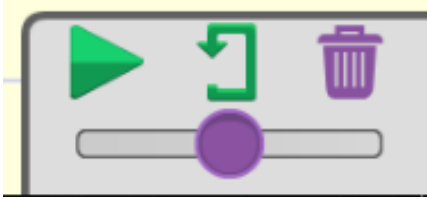
There are several paper and line colour combinations to enable individuals or teachers to select a combination that reduces the visual stress of pupils especially those who are sensitive to the page colouring. The available combinations are:





2.3 Recording tools

There are recording controls in the bottom right-hand corner:



The program is set to record everything written on the screen as soon as it is opened. There is no record button.

Recording enables a teacher to record a demonstration of how to form particular letters or words and then use this in class or set as a 2do.

Teachers can also review the way that pupils have formed the letters when a 2Handwrite file is saved by a pupil.



Press to play back the recording.



Loop the playback.



Delete the recording and begin a new recording.



The slider alters the play-back speed.



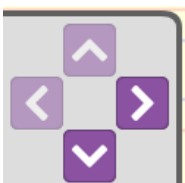
When text is erased this will be recorded as well.



Clicking the undo button will remove any recording of the writing that is 'undone'.

2.4 Navigation Tools

The navigation tools are on the bottom left. They enable the user to navigate around the text of the page and are positioned to allow easier use on an interactive whiteboard.



When recording the screen, any navigation will be included in the recording.




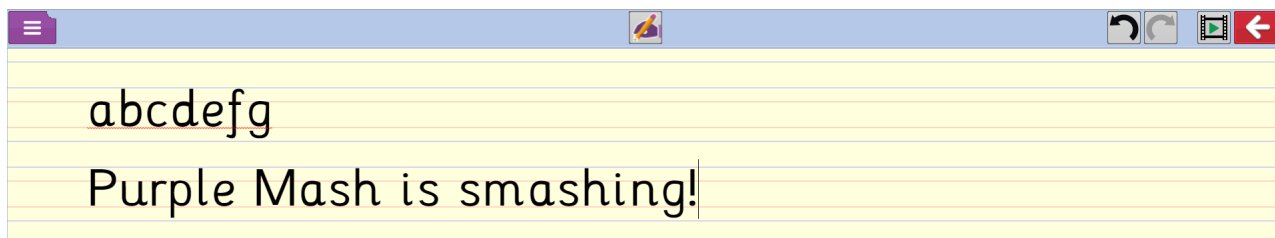
3. Worksheet Creator


The worksheet creator allows the production of custom handwriting practice sheets for use off-line.

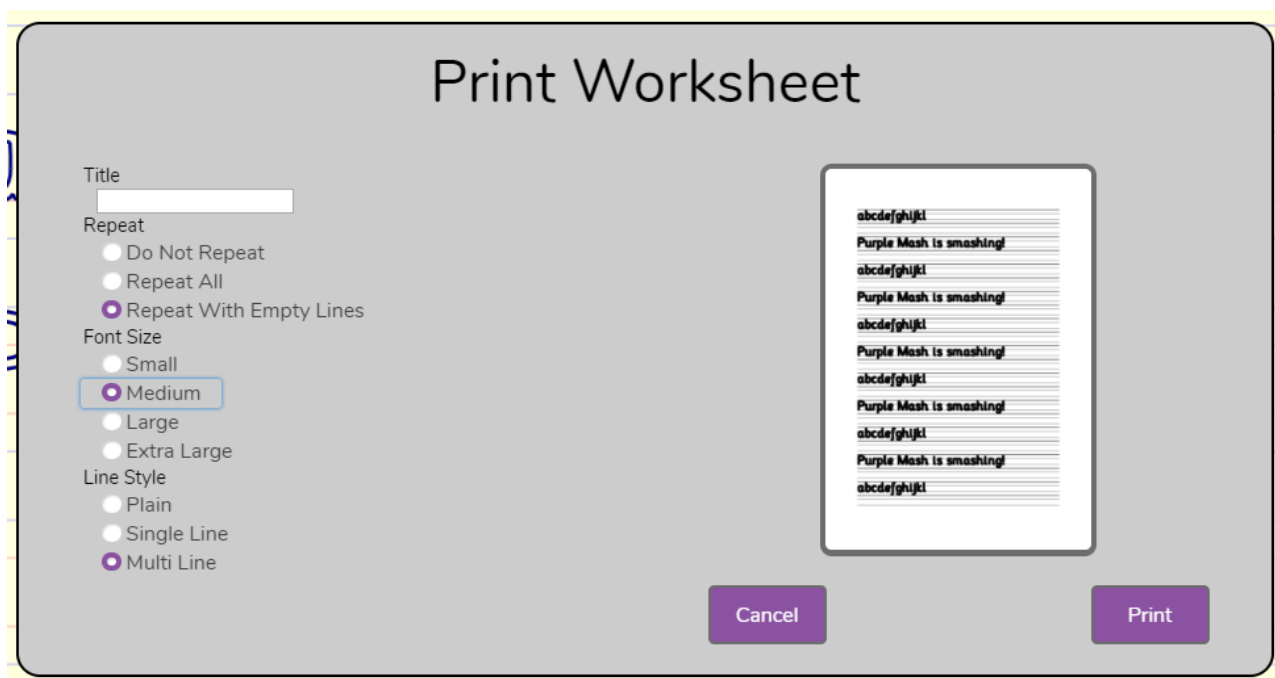
To create a worksheet:



1. Enter keyboard entry mode by clicking the  button.
2. Enter any required text. You do not have to type repeated words as the creator can repeat as required.



3. Click the  button to open the worksheet creator screen. The preview shows what your sheet will look like.



4. Choose the required options for repeat, font size and line style. Check the preview image until you are happy with the look of the sheet. For longer sentences, you might need to split the text onto separate lines to fit it onto the sheet at the required size.
5. Click the Print button. This will generate a pdf file that you can save to your device and print as required.